

TA900X



hahne



HIGHLY FLEXIBLE TILE ADHESIVE

Product Description

hahne TA900X is a premium highly flexible tile adhesive, produced by a precise blend of cement, natural silica sand, polymer, natural cellulose and specially selected additives. It provides a flexible, deformable, cementitious adhesive with a high slip resistance and improved open time. It ensures excellent bonding and consistency in various weather conditions. **hahne TA900X** is formulated as per **IS 15477:2019** standards and follows **ISO 13007-1:2014**. It is available in grey and white. For sensitive natural stones, translucent glass mosaic and also glass tiles, the white version is highly recommended.

Area of Applications

hahne TA900X can be used for interior and exterior applications on floors and walls.

Usable for: Ceramics, Porcelain, Glass, Mosaics, Marble, Travertine, Granite, Limestone, Terracotta, Quarry stone, Slate, Quartzite, Brick slips, Resin-backed.

Recommended Substrates

- Cement mortar surfaces (concrete floors, cement plastered walls, brickwork)
- Cement board (backer board in both wet and dry areas)
- Plasterboard (for dry internal areas)
- Existing tiled surfaces (sound ceramic or porcelain tiles, after surface preparation)
- Concrete (cured concrete surfaces)
- Masonry surfaces (brick and block walls)

Features and Benefits

- Highly flexible
- For fixing large tile formats
- Excellent water and impact resistance
- Excellent adhesive strength
- Good slip resistance
- Minimal shrinkage
- Highly polymer-modified
- Excellent workability
- Extended open time

Consumption

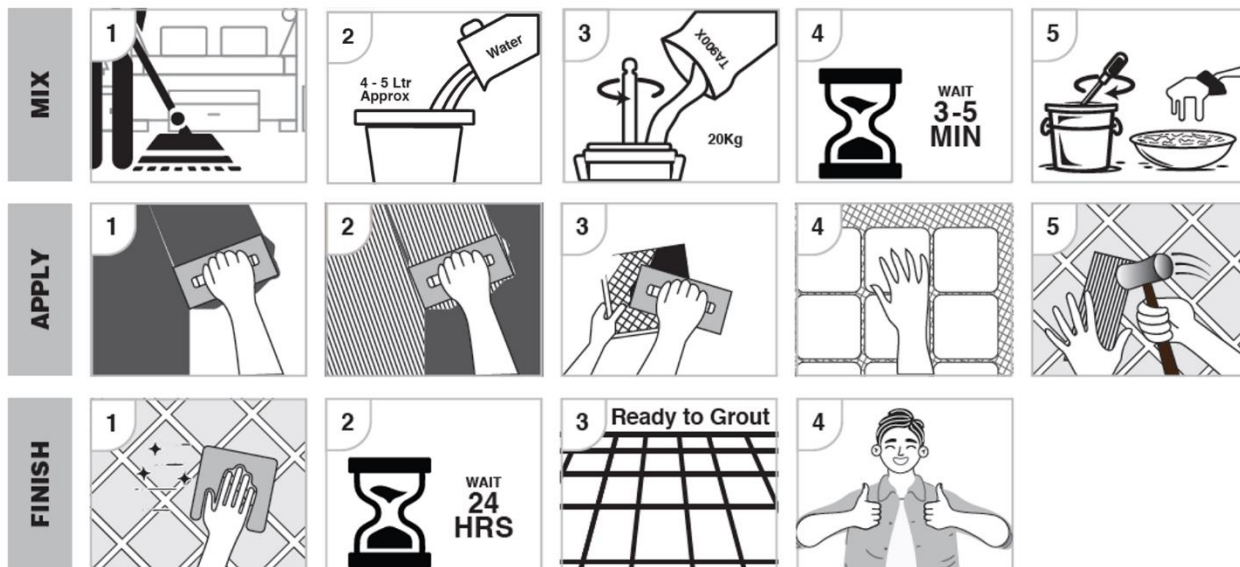
4-5 kg per sqm @ 3 mm bed

(Consumption will depend on substrate condition, bed thickness, notch size of trowel and tile size)

HIGHLY FLEXIBLE TILE ADHESIVE

Technical Specifications

Form	Powder
Colour	Grey & White
Pot life	approx. 6 hrs at 25°C
Open Time	approx. 40 min at 25°C
Adjusting Time	approx. 50 min at 25°C
Dry Density	1.45 +/- 0.05 kg/l
Application temperature	+5°C to +35°C
Water requirement	20% – 25% of powder weight
Ready to walk on	24 hours
Ready for grouting on floor	24 hours
Ready for grouting on wall	8 hours
Ready for use	14 days



Surface Preparation

All surfaces should be between 4°C and 32°C, structurally sound, clean, and free of all dirt, oil, grease, concrete sealers or curing compounds. For surfaces which are dusty and/or highly porous we recommend using primer.

Mixing Ratio

Add 4 to 5 liters of cold, clean, potable water for a 20 kg bag of **hahne TA900X** adhesive mortar powder. Pour the water into the bucket and slowly add the powder while mixing by hand or with a slow-speed mixing machine until a uniform, lump-free, smooth, thick consistency is achieved. After approximate 3 minutes, mix the tile adhesive again. If necessary, add some water to get the correct consistency.

TA900X



hahne



HIGHLY FLEXIBLE TILE ADHESIVE

Application Procedure

hahne TA900X should be applied after proper surface preparation. Apply using a flat trowel at a thickness of 3 mm and level it with a notched trowel. The thickness of the ribs will depend on the size of the tile. For tile surface area <500 cm², (6x6x6) mm notch is recommended and for higher surface area tiles, (8x8x8) mm and (10x10x10) mm notch sizes should be used. For large format tiles and translucent glass tiles the buttering floating application is necessary. Apply only as much adhesive as can be installed within the specified open time and tile adjustment time to ensure optimal bonding and performance. Fix the tiles immediately with a sliding motion to get a high bonding quality. Correct the position of the tile before the adjusting time of the mortar; otherwise, it will affect bond strength. After fixing the tiles, remove the excess mortar with a damp cloth before the material sets. It is also recommended to clean joints properly for further grouting.

Precautions and Limitations

Avoid applying the adhesive on wet substrates, as it may affect the bonding quality. During curing, protect the applied adhesive from rain and frost to ensure it cures properly.

Packaging

hahne TA900X is available in 20 kg bags.

Storage and Shelf Life

Store the adhesive in a cool, dry place, away from direct sunlight and moisture, to maintain its quality. The shelf life of the product is 12 months if stored in its original sealed packaging.

Safety Instructions

Contains Portland cement and silica sand. May irritate eyes and skin. Avoid contact with eyes or prolonged contact with skin. In case of contact, flush thoroughly with water. Do not ingest. Silica sand may cause cancer or serious lung problems. Avoid breathing dust. Wear a respirator in dusty areas.

DISCLAIMER: The information and application guidelines provided by the company and its representatives are intended solely as a general reference. Users are strongly encouraged to conduct their own tests and trials to verify the product's suitability for their specific requirements before proceeding with full-scale use. As the identification of underlying issues, the quality of other materials and the workmanship on-site are beyond our control, we cannot offer any express or implied guarantees regarding the results. The company disclaims any liability for damages or unsatisfactory outcomes that may arise from the use of our products.

TA900X HIGHLY FLEXIBLE TILE ADHESIVE